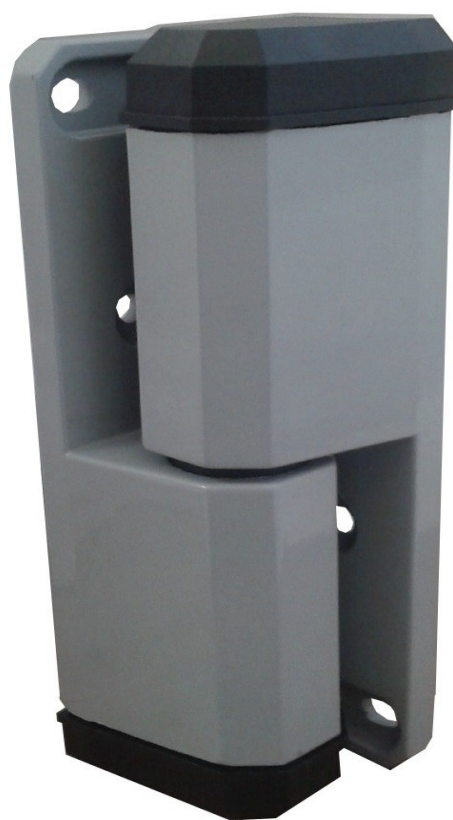


CERNIERE

cod. 4260
cod. 4260/2



cod.4269



PER PORTE A TAMPONE FOR OVERLAPPING DOORS

CERNIERE CON RAMPA A MOVIMENTO ASCENDENTE *HINGE WITH UP – LIFTING RAMP*

COD.4260 C **CROMATA**
CHROMED
COD.4260 V **VERNICIATA**
LACQUERED

CERNIERE *HINGES*

COD.4260/2 C **CROMATA**
CHROMED
COD.4260/2 V **VERNICIATA**
LACQUERED

Sporgenza : **superiore a mm.50**
Offset : *over 50 mm*
Dimensioni : **a disegno**
Dimensions : *as drawing*
Materiale : **fusione in zama-componenti rampa in nylon**
Material : *zamak fusion-ramp components in nylon*
Finitura : **cromata e verniciata**
Finishing : *chromed and lacquered*

Note : le cerniere cod.4260 e cod.4260/2 sono idonee ad entrambi i sensi di apertura della porta.
Apposito spessore cod.4260SP10=mm. 10 permette di adeguare le cerniere alle diverse sporgenze.

Remarks : hinges codes 4260 and 4260/2 fit both directions of door opening.
Appropriate thickness cod.4260SP10=mm. 10 allows to fit our hinges to different offsets.

CERNIERE *HINGES*

COD.4269 C **CROMATA**
CHROMED
COD.4269 V **VERNICIATA**
LACQUERED

Sporgenza : **superiore a mm.35**
Offset : *over 35 mm*
Dimensioni : **a disegno**
Dimensions : *as drawing*
Materiali : **fusione in zama-boccole in nylon**
Materials : *zamak fusion-nylon bucklers*
Finitura : **cromata e verniciata**
Finishing : *chromed and lacquered*

Apposito spessore cod.4269SP20=mm. 20 permette di adeguare le cerniere alle diverse sporgenze.
Appropriate thickness cod. 4269SP20=mm. 20 allows to fit our hinge to different offset

