

CREMAGLIERE



cod.3460

SUPPORTI



cod. 3466



cod.3467



cod.3468



PER ARMADI E VETRINE FOR CUPBOARDS AND GLASS SHOW-CASES

CREMAGLIERE RACK

COD. 3460/30 F -mm. 300 con foro supplementare
(with additional hole)

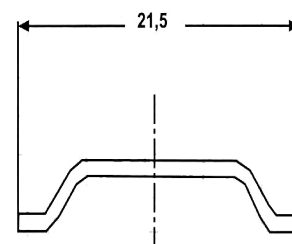
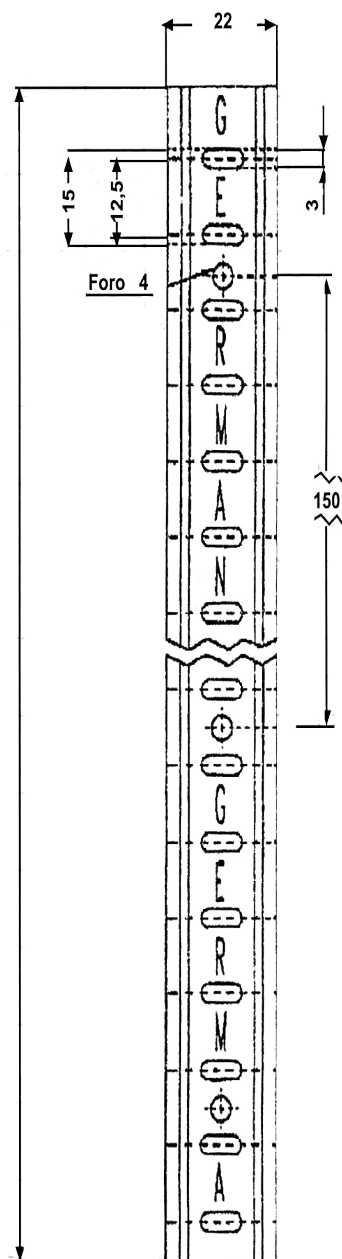
COD.3460/30 -mm. 300
COD.3460/60 -mm. 600
COD.3460/90 -mm. 900
COD.3460/120 -mm. 1200
COD.3460/150 -mm. 1500
COD.3460/450 -mm. 450

Lunghezze : mm. 300 – 600 – 450 – 900 – 1200 – 1500
Lenght : mm. 300 – 600 – 450 – 900 – 1200 – 1500

Materiale : acciaio inox
Material : stainless steel

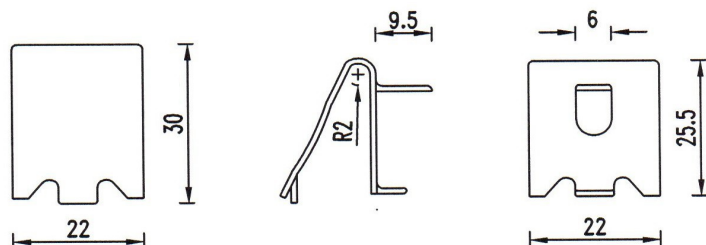
Dimensioni : a disegno
Dimensions : as drawing

Note : altre lunghezze su richiesta
Note : other length under request

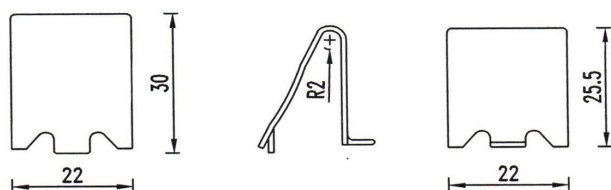


SUPPORTI RACK CLIP BRACKETS

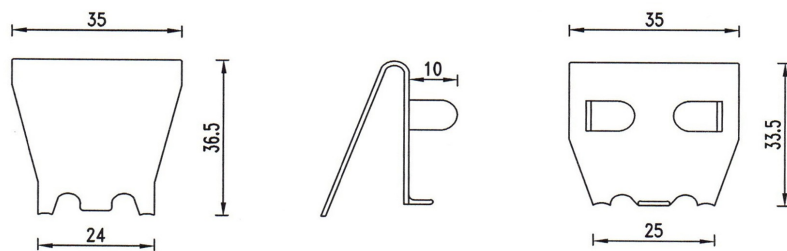
COD.3466- **acciaio inox- con piolino**
stainless steel- with pin



COD.3467- **acciaio inox – senza piolino**
stainless steel – without pin



COD.3468- **acciaio inox – con doppio piolino**
stainless steel- with double pin



Materiali : **acciaio inox**
Materials : **stainless steel**

